

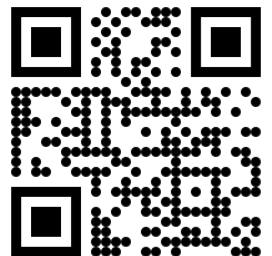


Drives Operational Effectiveness

PT BANGUN ENERGI

COMPANY PROFILE

Electrical, Telecommunication, Instrumentation, and Automation
Supply and Services



LINK DOCUMENT

CONTENT

INTRODUCTION

01

CORE BUSINESS

02

LEGAL DOCUMENT

03

PRODUCTS

04

PROJECT PROFILE

05

HEALTH AND SAFETY

09

ENVIRONMENT

11

BRAND

12

OUR CUSTOMER

13



Introduction

Established in 2008, Bangun Energi is a national private company specialized in supply of equipments and services in the field of Electrical, Telecommunication, Instrumentation and Automation.

Bangun Energi also involved in development of human resources in Indonesia by having a collaboration with higher education such as ITB, ITS, IT PLN, Telkom University, Politeknik Bandung, and many more.

Within 18 years, Bangun Energi have successfully accomplished several projects such as Security Systems at BPN and provided learning equipments for aviation application ATKP Surabaya, Papua, STPI Curug, Politeknik Negeri Malang, Politeknik Negeri Batam, Politeknik Negeri Bandung and many more clients.



VISION

Be a reliable and reputable national company providing equipment and service in Industrial Field and vocational higher education

MISSION

- Become a reliable supplier in the industrial field with satisfactory services.
- Actively involved in developing competence of technical student by providing advanced technology equipments for higher education.
- Become a company that provides sustainable benefits to stakeholders.





CORE BUSINESS

TRADING

Supply of Electrical, Instrumentation, Automation and Telecommunication.

RENTAL EQUIPMENT


Rental of electrical devices such as Uninterruptible Power System, Battery, Generator Set, Load Bank DC and Load Bank AC.

SERVICES

Providing skilled manpower for services in installation, commissioning, operation and maintenance.

TRAINING & VOCATION

Bangun Energi involved in development competence of human resources in Indonesia by providing highly technology equipment to be applied in technical higher education and training.



LEGAL DOCUMENT



PEMERINTAH REPUBLIK INDONESIA
PERIZINAN BERUSAHA BERBASIS RISIKO
NOMOR INDUK BERUSAHA: 0220102432033

Berdasarkan Undang-Undang Nomor 11 Tahun 2020 tentang Cipta Kerja, Pemerintah Republik Indonesia menerbitkan Nomor Induk Berusaha (NIB) kepada:

- | | |
|--|--|
| 1. Nama Pelaku Usaha | : PT BANGUN ENERGI |
| 2. Alamat Kantor | : Jl. Bukit Gading Raya Komplek Gading Bukit Indah Blok V No. 2,
Desa/Kelurahan Kelapa Gading Barat, Kec. Kelapa Gading, Kota Adm.
Jakarta Utara, Provinsi DKI Jakarta,
Kode Pos: 14240 |
| No. Telepon | : 021 45854518 |
| Email | : bangunenergic022@gmail.com |
| 3. Status Penanaman Modal | : PMDN |
| 4. Kode Klasifikasi Baku Lapangan Usaha Indonesia (KBLI) | : Lhat Lampiran |

NIB ini berlaku di seluruh wilayah Republik Indonesia selama menjalankan kegiatan usaha dan berlaku sebagai Angka Pengenal Import (API-I), hak akses kepastian, pendaftaran kepastian jaminan sosial kesehatan dan jaminan sosial ketenagakerjaan, serta bukti pemenuhan laporan pertama Wajib Laporan Ketenagakerjaan di Perusahaan (WLPK).

Pelaku Usaha dengan NIB tersebut di atas dapat melaksanakan kegiatan berusaha sebagaimana terlampir dengan tetap memperhatikan ketentuan peraturan perundang-undangan.

Diberikan di Jakarta, tanggal: 23 April 2020
Perubahan ke-14, tanggal: 19 Oktober 2022

**Menteri Investasi/
Kepala Badan Koordinasi Penanaman Modal,**



Ditandatangani secara elektronik

Cetakan tanggal 19 Oktober 2022

1. Dokumen ini diterbitkan sistem OSS berdasarkan data dari Pelaku Usaha, terlampir dalam sistem OSS, yang menjadi tanggung jawab Pelaku Usaha.
2. Dalam hal terjadi kebalikan isi dokumen ini akan dilakukan perbaikan selanjutnya masing-masing.
3. Dokumen ini telah diterbitkan secara elektronik menggunakan sertifikat elektronik yang diterbitkan oleh BSN-BESN.
4. Data lengkap Perizinan Berusaha dapat diperoleh melalui sistem OSS menggunakan link akses.



KEMENTERIAN KEUANGAN REPUBLIK INDONESIA
DIREKTORAT JENDERAL PAJAK
KANTOR WILAYAH DJP JAKARTA UTARA
KANTOR PELAYANAN PAJAK PRATAMA JAKARTA-KELAPA GADING

SURAT KEBERANGKATAN TERDAFTAR
Nomor: PSM.0001/WP.11/KP.0002/2024

Berdasarkan Pasal 2 ayat (1) / Pasal 2 ayat (4) Undang-Undang Nomor 5 Tahun 1983 tentang Ketentuan Umum dan Tata Cara Perpajakan sebagaimana telah diubah terakhir dengan Undang-Undang Nomor 16 Tahun 2001 dan Peraturan Direktur Jenderal Pajak Nomor PDK.10/2021/3, dengan ini diterbitkan bahwa:

1. Nama	: PERBANGUN ENERGI
2. Nomor Pokok Wajib Pajak (NPWP)	: 02340855403000
Nomor Induk Kependudukan (NIK)	
3. Klasifikasi Lapangan Usaha (KLU) / Usaha	: 4899 - PERDAGANGAN BESAR BERBAGAI MACAM BARANG PERDAGANGAN ECERAN, BUKAN MOBIL DAN MOTOR
4. Alamat	: JL. BUKIT GADING RAYA KOMPLEK GADING BUKIT INDAH BLOK V NO.2 KELAPA GADING BARAT, KELAPA GADING, JAKARTA UTARA, DKI JAKARTA, 14240
5. Rangoer	: BARAN
6. Tanggal Mulai Terdaftar	: 18 Desember 2024
7. Keterangan Pajak	

PPN Sumber	Pemungutan dan Pembayaran PPN
[X] PPN Pasal 13	[] PPN Pasal 4(2)
[] PPN Pasal 13 (PPT)	[] PPN Pasal 11
[X] PPN Pasal 29	[] PPN Pasal 16
[] PPN Final	[X] PPN Pasal 21
	[] PPN Pasal 22
PPN :	[] PPN Pasal 23
[] PPN Kegiatan	[] PPN Pasal 26
[] PPN Kegiatan	
Membayar Sanksi (KMS)	

Hal ini diterbitkan pada alamat email: ksmi@kubling.co.id, 18 Desember 2024

Adams, 17 Maret 2014
A. S. Supriyanto
Kepala Kantor Pelayanan Pajak Pratama Jakarta Kelapa Gading

TRADING

Electrical



Uninterruptible Power Supply



Capacitor Bank



LV Panel Distribution



Battery



Variable Speed Drive

TRADING

Process Instrumentation

Pressure Transmitter

Gauge pressure



IGP05S
IGP105S
IGP50S

Absolute pressure



IAP05S
IAP10S
IAP50S

Multivariable



IMP10S
FLW10S

Differential pressure



IDP05S
IDP10S
IDP50S

Flowmeters



IMT30A, IMT31A and IMT33A



9500A



9600A



8400A



8500A



8700A

Temperature transmitters

Temperature transmitters



RTT8S



RTT6

Thermowells



Sensors



Level Product Portfolio



LDT1 Quick/Walk



LDT1 10 GHz



LRS1 34 GHz



LRS1 24 GHz



LDT1 24 GHz



LRS1 50 GHz



LRT1 88 GHz



SHALO LevelStar



1ETLP

Automation

Foxboro[™]
by **Schneider Electric**

DCS



Datalogger



Remote Terminal Unit

Triconex
by **Schneider Electric**

Emergency Shutdown Device (ESD)

TELECOMMUNICATION PACKAGE



PAGA System



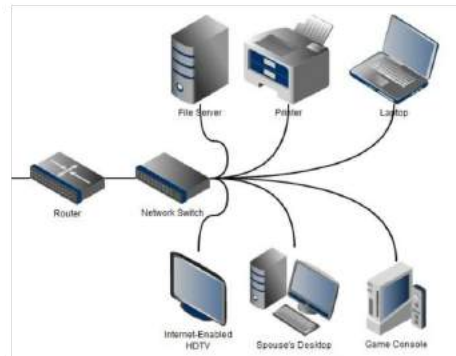
Telephone System



Radio System



Security System



LAN System

RENTAL EQUIPMENT

Bangun Energi offers rental of electrical devices such as Uninterruptible Power System, Battery, Solar Generator Set, DC Load Bank and AC Load Bank which can reduce costs while maintaining quality.



Solar Generator Set



Uninterruptible Power Supply (UPS)



Battery



Load Bank DC



Load Bank AC

VOCATION AND TRAINING

Bangun Energi involved in development competence of human resources in Indonesia by providing highly technology equipment to be applied in technical higher education and training.



Power Plant Simulation



Scada

SERVICES

PRODUCTS (SCOPE OF WORK)



**PROJECT
MANAGEMENT**



**PROCESS & PROCESS
SAFETY**



MECHANICAL



INSTRUMENT



ELECTRICAL



TELECOMMUNICATION

Bangun Energi provides services for electrical instrumentation such as Preventive Maintenance and Inspection, Spare Parts Stocking Recommendation, Operator Training, Installation, commissioning and maintenance

PROJECT PROFILE

OIL & GAS PRODUCTION INDUSTRY



Project Banyu Urip Mobil Cepu Limited (MCL)

Owner
Exxon Mobil and Pertamina,

Location
Cepu Banyu Urip

Project Brief
Detail Engineering for Electrical & Instrument (Automation).

Pengadaan dan pembangunan substation di Pertamina RU 2 Dumai

Owner
Pertamina RU 2 Dumai

Location
Pertamina RU 2 Dumai

Project Brief
Detail Engineering for Civil, Electrical, Instrument & Mechanical.



Re-Instrumentasi Kilang Plaju

Owner
PT Pertamina RU III Plaju

Location
PT Pertamina RU III Plaju

Project Brief
Detail Engineering for Electrical & Instrument.



Pengadaan Sistem Data Informasi Wantanas

Owner
Dewan Ketahanan Nasional

Location
Jakarta

Project Brief
Detail Engineering for Network Infrastructure, Server & Database, Electrical, Software Simulation, Security System, Video Wall,





Pengadaan Lab. Operator Training Simulation (OTS) Pembangkit Listrik Coal Fired

Owner
Institut Teknologi Sepuluh Nopember (ITS)

Location
Surabaya, Jakarta

Project Brief
Detail Operator Training Simulator

Metering Station North Geragai

Owner
JOB Talisman

Location
Jambi

Project Brief
Detail Engineering for Electrical, Civil, Instrument & Automation.



Politeknik Negeri Medan

Owner
Politeknik Negeri Medan

Location
Medan

Project Brief
Detail Engineering for Electrical, UPS, Welding Laboratorium



Politeknik Penerbangan Surabaya

Owner
Politeknik Negeri Surabaya

Location
Surabaya

Project Brief
Detail Engineering for Electrical, Flight Simulation, Air Craft Engine Laboratorium





HEALTH, SAFETY & ENVIRONMENT

The Management commits to perform the company's business activities based on good Health Safety Environment. It is the Management's full responsibility to ensure that every employee carries out prevention of material and non-material losses by implementing in and paying attention to Health Safety Environment aspect to increase competitiveness and added value for the company in dealing with global competition. Therefore, the Management of commits:

1. To achieve zero accident vision and the company's main targets, namely zero in death, disease, and environmental pollution caused by the company's business execution.
2. To become example and model and at all times promote the implementation of the Management System of Health Safety and Environment Protection in the company
3. To boost competence enhancement by all employees relating to the continual implementation of the Management System of Health Safety and Environment Protection in the company's environment;



CORPORATE SOCIAL RESPONSIBILITY

Cares for communities' need and welfare. Since established in 2001, through its mission and social programs have been providing not only the best engineering services for our customers, but also the best services to the surrounding communities. Committed to grow together with the surrounding communities because it believe having a good relations with the surrounding communities is essential to create a better future. Its continuing commitment can be shown from Its social programs to the local communities which held annually, such as donation to orphans, poor community for their basic needs, toddlers for free immunization, blood donor and many more.



OUR BUSINESS PARTNER

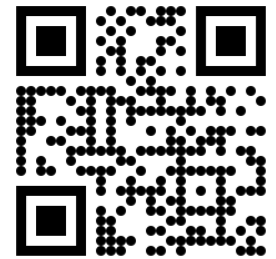


OUR CUSTOMER



VOCATION





LINK DOCUMENT



Drives Operational Effectiveness

Komp. Gading Bukit Indah
Jl. Bukit gading Raya Blok V No. 2
Jakarta 14240
Indonesia

www.bangun-energi.co.id